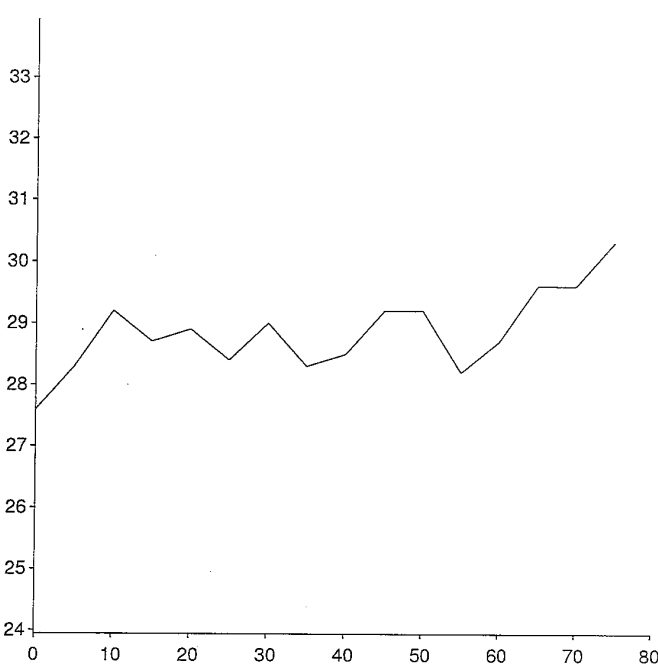
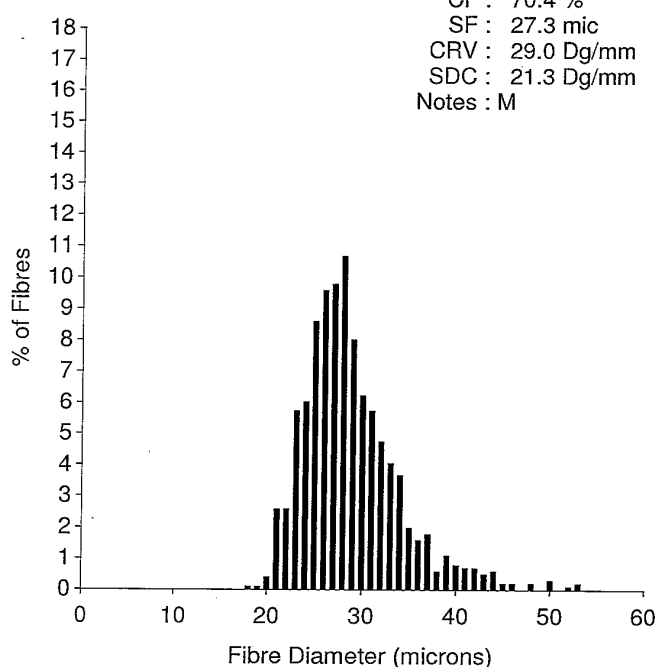


OFDA 2000 REPORT : SORTED BY EID/TAG

Samples 02/05/2019 (Trim High On) (153Records)

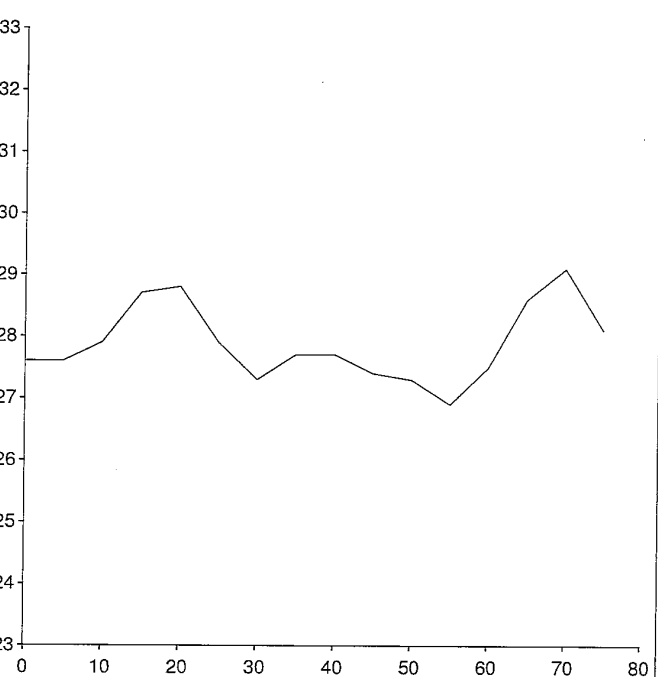
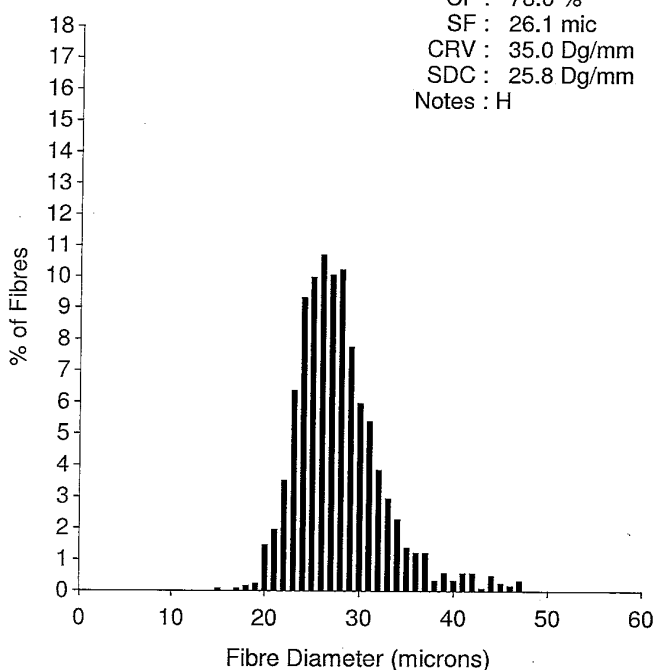
EID : Winter's A
 EarTag : Alblacka T
 Micron : 28.8 mic
 SD : 5.1 mic
 CVD : 17.8 %
 CEM : 10.6 mic
 <15 : 0 %
 CF : 70.4 %
 SF : 27.3 mic
 CRV : 29.0 Dg/mm
 SDC : 21.3 Dg/mm
 Notes : M

Staple Len : 80.0 mm
 Min Mic : 27.6 mic
 Max Mic : 30.3 mic
 SD Along : 0.70 mic



EID : Winter's A
 EarTag : Alblacka T
 Micron : 27.8 mic
 SD : 4.6 mic
 CVD : 16.5 %
 CEM : 9.1 mic
 <15 : 0 %
 CF : 78.0 %
 SF : 26.1 mic
 CRV : 35.0 Dg/mm
 SDC : 25.8 Dg/mm
 Notes : H

Staple Len : 80.0 mm
 Min Mic : 26.9 mic
 Max Mic : 29.1 mic
 SD Along : 0.60 mic



OFDA 2000 REPORT : SORTED BY EID/TAG

Samples 02/05/2019 (Trim High On) (153Records)

EID : Winter's A
 EarTag : Alblacka T
 Micron : 30.7 mic
 SD : 4.7 mic
 CVD : 15.2 %
 CEM : 9.0 mic
 <15 : 0 %
 CF : 53.0 %
 SF : 28.6 mic
 CRV : 32.0 Dg/mm
 SDC : 25.0 Dg/mm
 Notes : V

Staple Len : 75.0 mm
 Min Mic : 30.0 mic
 Max Mic : 31.2 mic
 SD Along : 0.40 mic

